

6 UNIVERSITY OF ALBERTA MUSEUMS GALLERIES
 ENTERPRISE SQUARE • INTERIOR OF 10230 JASPER AVE.
 TH-F 12-6PM, SA 12-4PM

A remarkable series of changing exhibitions from the University of Alberta's 29 museum collections, travelling exhibitions and the Edmonton visual arts community are always on display in these galleries.

7 CASTLE OF PERSEVERANCE 1982
PETER HIDE
 10305 JASPER AVE.

With the turn of the 20th century, the modern movement in art had begun. Avant-garde artists were no longer concerned about representing the world as it appeared – the camera could do that. Instead, artists were liberated to explore art as a purely visual experience, un-tethered from the constraints of description and narrative. A fertile ground was laid for artists to experiment with proportion, form, technique and material - from this, abstraction was born. Working in the cubist assembled sculpture tradition of Pablo Picasso, David Smith and Anthony Caro, Peter Hide's work is informed by decades of practice.

THE ART REVEALS THE CITY'S HISTORY, ITS EVER-CHANGING CULTURE AND SHIFTING IDEAS ABOUT WHAT IS VALUABLE AND MEANINGFUL. LIKE WITH ALL ART, EDMONTONIANS HAVE FAVOURITES AND NOT-SO-FAVOURITES. REGARDLESS, THE ARTWORK STANDS AS A STATEMENT TO THE MANY SIDES OF OUR CITY'S CHARACTER. EDMONTON'S PUBLIC ART COLLECTION FLOURISHES THANKS TO THE EFFORTS OF THE ALBERTA FOUNDATION FOR THE ARTS, THE EDMONTON ARTS COUNCIL, AND THE ART & DESIGN IN PUBLIC PLACES PROGRAM (THE PLACES) OF THE WORKS INTERNATIONAL VISUAL ARTS SOCIETY. ENJOY! • **SUSAN POINTE, CURATOR OF ARTTOUR YEG**

8a SENTINEL 1990/91
KATIE OHE
 INTERIOR AT MAIN ENTRANCE • 10405 JASPER AVE.
 M-F 6AM-6PM

Sophisticated, elegant, and compelling-to-touch are common descriptors for the life-sized sculpture by Katie Ohe. After graduating in 1960 from Alberta College of Art, Ohe became one of the first artists to make abstract sculpture in Alberta. Today, she is known as one of the most influential artists in Alberta.

8b UNTITLED 1981
KEN CHRISTOPHER

Ken Christopher's work has been included in numerous exhibitions across Canada and his artwork can be found in important collections including the Prime Minister's residence and the Canada Council Art Bank.

Edmonton



A DOWNTOWN FOR EVERYONE



THE PLACES
 ART & DESIGN IN PUBLIC PLACES



THE WORKS
 INTERNATIONAL VISUAL ARTS SOCIETY

ARTTOUR YEG

JASPER AVENUE

DOWNTOWN EDMONTON IS HOME TO A COLLECTION OF PUBLIC ART THAT IS DIVERSE, ECLECTIC AND COMPELLING.

1a GEESE IN THE CITY 2013
HOLLY NEWMAN
 102 ST. & JASPER AVE. THROUGH 102 ST. & JASPER AVE.

Holly Newman's whimsical prose and illustrations, etched into the black granite of Jasper Avenue's benches and planters, provide a delightfully creative touch to the street furniture. Evoking the grace and tenacity of Canadian geese, the 21 pieces can be enjoyed from any direction. For the purists at heart, A-K indicate the order of the artist's preferred prose. This work is part of the City of Edmonton's public art collection.

2 RETURN 2001
CATHERINE BURGESS
 EAST EXTERIOR OF UNION BANK INN
 10053 JASPER AVE.

Catherine Burgess continues to produce sculpture that is elegant and timeless. Her refined approach to donor recognition is effective with 390 individually cast aluminum rings interconnected to represent the Edmonton Community Foundation, their donors and monetary recipients.

3 COLUMNS 1992
JIM LEEDY, RANDY SCHMIDT, TORBJORN KVASBO, OLE LISLERUD & CHUCK WISSINGER
 INTERIOR OF SOUTH ENTRANCE
 COMMERCE PLACE • 10155 - 102 ST.
 M-SU 5AM-1AM

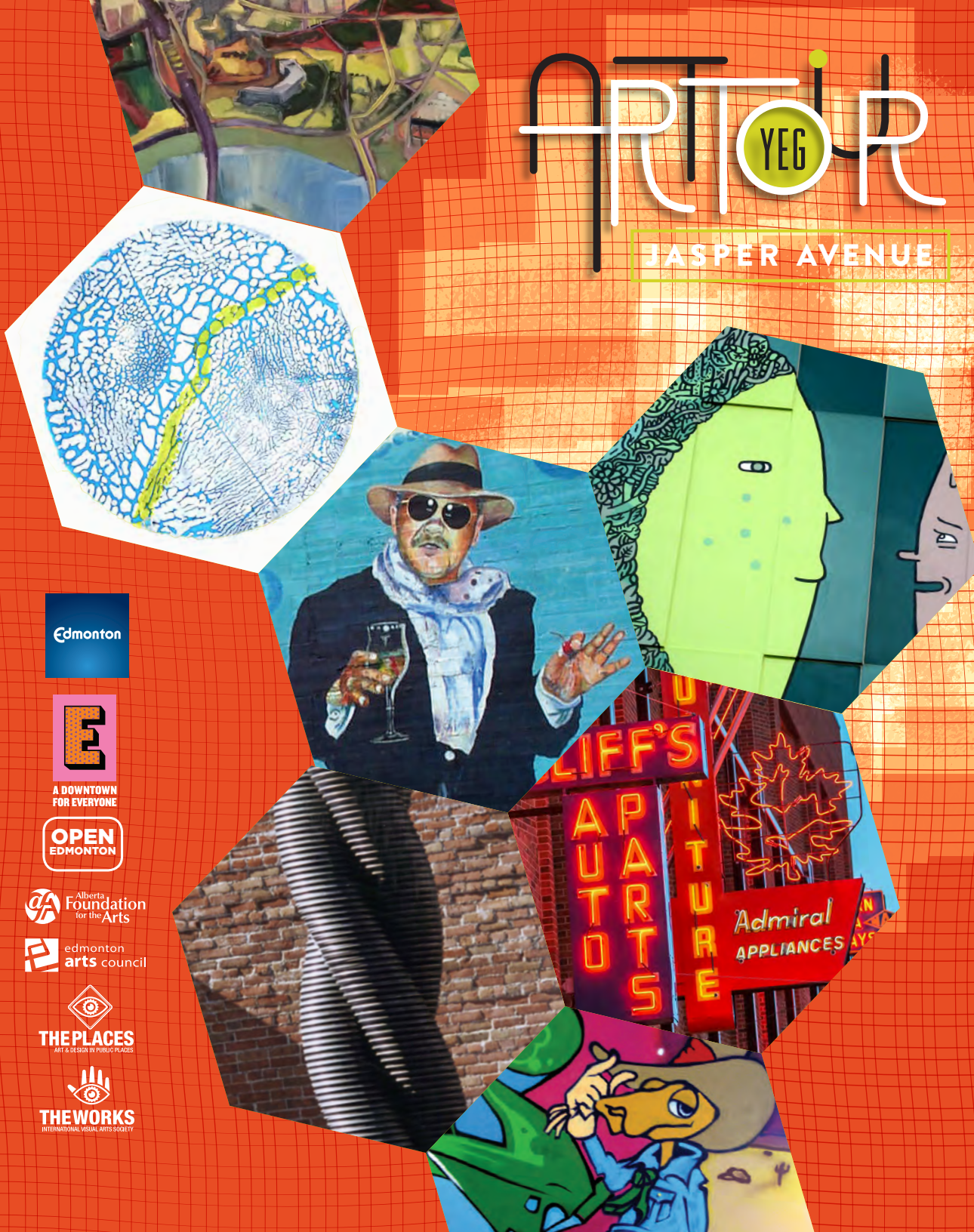
Led by Kansas City's pre-eminent ceramic artist Jim Leedy and hosted by Red Deer College's Artist Residency Program, *Columns* features the collaborative work of 22 students and five artists from three nations. The five 10ft. tall clay totems are incredibly rich with texture, and comprise iconic faces and symbols of Alberta's unique character and history. Jim Leedy, together with hundreds of visitors to the 1992 Works Festival, created the four additional murals.

4 CLOUDS 2003
GORDON FERGUSON
 NORTH EXTERIOR WALL • 10045 - 102 ST.

These stainless steel clouds evolved from photographic imagery of cloud formations and were translated onto 35 eight ft. stainless steel plates that were laser cut in a semi-circular format. *Clouds* integrates the forces of nature into the urban landscape.

5 NEW PERSPECTIVES SEVEN 2010
MICHEAL COR
 ENTERPRISE SQUARE • INTERIOR OF 10230 JASPER AVE.
 M-F 6AM-9PM, S-S 6AM-6PM

A former industrial mechanic from rural Alberta, Cor brings a refreshingly loose approach to a common Edmonton view.



9 TRANSITION 2010
**EDMONTON SMALL PRESS ASSOCIATION,
 JOSH HOLINATY & LUKE RAMSEY**
 EAST EXTERIOR WALL • 10010 - 105 ST.
 Honoured with a 2012 National Urban Design Award, the ESPA proves that doodling can communicate very important messages. Designed by fellow zinesters Holinaty and Ramsey and created by a team of 14 artists, *Transition* reflects movement towards an ideal and sustainable Edmonton.

10 CHEZ PIERRE 2000
IAN MULDER
 SOUTH EXTERIOR WALL • 10040 - 105 ST.
 Under the watchful eyes of disapproving neighbours and barred from acquiring a liquor license, Pierre Cochard operated Edmonton's first nude dancing club for more than 40 years. The 26-year-old title-winning Belgian boxer arrived in Edmonton in the 1950s with \$5 in his pocket. The enterprising Cochard started Edmonton's first chuckwagon lunch business and ran it for 17 years. In 1970 Cochard opened a disco, but business was limited to Fridays and Saturdays. Upon discovering a nude dancing club in Calgary was attracting patrons six days a week, the disco was re-conceived. Forty five years later, under the management of Cochard's grandson, Chez Pierre Caberet received its first liquor license. To celebrate, the 89-year-old Cochard ordered a Stella Artois.

11 NEKA'NEW'AK: ABORIGINAL WALK OF HONOUR
 BEAVER HILLS HOUSE PARK • 10440 JASPER AVE.
 Created as a tribute to those Aboriginal artists and leaders who have blazed trails in the arts and film industry, the Dreamspeakers' *Aboriginal Walk of Honour* recognizes their efforts at bringing new understandings to Canada's Aboriginal Peoples. The annual Dreamspeakers' Film Festival celebrates the best of Aboriginal films from around the globe.

12 7 NORTHERN BEAVERS 2011
JASON CARTER
 BEAVER HILLS HOUSE PARK • 10440 JASPER AVE.
 After winning several coveted public art commissions in the city, Cree artist Jason Carter's artwork is becoming well-recognized in Edmonton. Carter explains: "The rising beaver represents the rising of the Cree, the growth of the population as trade expanded and the rising of Edmonton as a city".

13 RECYCLES 2001
**ELIZABETH BOWERING BEAUCHAMP &
 LYNN MALIN**
 BEAVER HILLS HOUSE PARK • 10440 JASPER AVE.
 Memories of carefree independence on our bikes at the heart of *Recycles* - a circular parade of five stationary bicycles each built for two. The piece is as dynamic as a carousel, and with audience participation it offers a kinetic experience. Each 'cycle' is created largely from found objects in order to capture the pioneering attitude of making and repairing, rather than discarding.

14 BEAVER & FALLEN TREE 1977
DON BEGG
 BEAVER HILLS HOUSE PARK
 NORTH EAST CORNER • 10440 JASPER AVE.
 Don Begg and his wife Shirley Stephens-Begg own and operate Studio West, a major fine art foundry in Cochrane, Alberta. Begg's bronzes can be found all across North America and include more than 85 public monuments.

15 VALLEY WALL 2009
**WILL TRUCHON, LAYLA FOLKMAN
 & JUSTIN SHAW**
 SOUTH EXTERIOR WALL OF ICON TOWERS • 10070-104 ST.
 Another well-known artist and active member of the Edmonton art community is artist and architect Will Truchon. *Valley Wall* was a collaborative work commissioned as part of the 104 St. Promenade, a civic effort inviting art and good urban design to 104 St.

16 SWAY 2001
**ZOE BACCHUS, SHERRI SHORTEN
 & HAROLD WOLLIN**
 EAST EXTERIOR WALL • 10538 - 102 AVE.
 Look up! Twelve thousand individual pieces of tile compose this 12 x 20ft. mosaic. Blue Chair Café owner and Red Seal chef Harold Wollin united with artist Zoe Bacchus and architect Sherri Shorten to form the eclectic artistic team that would create this work.

17 ALBERTA CRAFT GALLERY
 10186 - 106 ST
 M-SA 10AM-5PM, TH 10AM-6PM, FREE
 The ACC Gallery and Shop presents the best in contemporary and traditional fine craft created by Alberta artists. Discover a jaw-dropping selection of handcrafted pottery, glass, jewellery, metal, woodwork, furniture, stone carving, fibre art, fashion and home accessories from more than 150 artists.

18 ODALISQUE 1992/93
PETER HIDE
 MacEwan University
 NW CORNER OF 105 ST. & 104 AVE.
 The University of Alberta welcomed Peter Hide, a pupil of pre-eminent abstract British sculptor Anthony Caro, to Edmonton in 1977. Hide became the senior sculpture instructor and influenced at least two generations of Edmonton sculptors. As a result, Edmonton has been one of the most active centres for abstract sculpture since the 1970s.

19 MAUNDY 1992/93
CLAY ELLIS
 MACEWAN UNIVERSITY
 NW CORNER OF 105 ST. & 104 AVE.
Maundy is in reference to the Christian holy day, Maundy Thursday, the day Jesus washed the feet of his 12 disciples before the Last Supper. Ellis speaks of the awe and humility he felt visiting Botswana. He was inspired by the people's homes that were enveloped by vast landscapes and the enormous handwoven grain baskets (sometimes three metres in diameter). After that residency, he redirected his practice to exploring simple objects such as vessels, tubs and basins.

20 NEON SIGN MUSEUM
 SW CORNER OF 104 ST. & 104 AVE.
 Lighting up the corner of 104 St. & 104 Ave. is a mesmerizing menagerie of neon from Edmonton's commercial past. These glowing pieces of history range from the National Railway, and the W.W. Arcade to the Georgia Baths. They bring charm, story, and civic memory to the street.

21 UNTITLED 2014
CURLY & LIZARD KING
 MERCER WAREHOUSE, 10363 - 104 AVE • IN VACANCY HALL
 SOUTH 7AM-11AM, F-SA 7AM-2AM
 Curly might have got his start on the street but after wowing Edmontonians with his show-stopping murals, he's now a well-known artist with his own space and his own clientele. Built in 1911 and renovated in 2010/11, the Mercer is now home to Curly's murals as well as some of Edmonton's movers and shakers in tech and design. Grab a coffee, enjoy the tavern, or shop in the uber-cool Vacancy Hall for local handmade creative goods.



THE PLACES, WORKS INTERNATIONAL VISUAL ARTS SOCIETY 1 2 3 4 5 12 13 15 16 20
 COLLECTION OF THE ALBERTA FOUNDATION FOR THE ARTS 6 11 14 17 18 19

**MOBILE WALKING COMPANION AND
 MORE INFO ON EACH ARTWORK**
ARTOURYEG.CA
 LET US KNOW YOUR EXPERIENCE - CLICK THE "FEEDBACK" BUTTON!